



THORN
LIGHTING

SENSA DMX

BRING LIGHT TO LIFE

SENSA DMX PUTS YOU IN CONTROL

Choose your perfect colours, create sequences and set the pace...

Compatible with Thorn's range of RDM-DMX luminaires or other DMX luminaires, the new, second generation Sensa DMX offers a complete range of products and accessories designed to easily create standalone dynamic lighting scenarios, ideal for building façades, bridges, monuments and other landmarks.

Colours can change at any pace requested to create visually pleasing sequences, using specialised yet intuitive software. Scenarios are loaded onto the controller via SD card, where they can be automatically triggered in real time, or via a simple user interface, requiring no internet connection or additional devices for permanent use.





COLOURFUL

When it comes to creating vibrant colours and designs, Sensa DMX is the ideal solution. Together with its intuitive programming software and Thorn's RGBW fixtures, precise colour matching and transitions are easily achieved.

REMOTE ADDRESSING

Addressing no longer needs to be carried out directly at the back of the luminaire, which often requires the fixture to be opened, taking time and potentially leading to field issues. Sensa DMX uses integrated software to remotely address fixtures, so all luminaires can be identified and programmed directly from the software, using the RDM extension to the DMX standard. (Luminaires must be RDM compatible).

DYNAMIC

Whatever the mood, whether it's a slow gradual change of tone and colour or amazing show effects designed to wow, Sensa DMX lets you set the scene. With its core DMX technology, Sensa DMX's refresh rate is typically 44 Hz to allow for fast-changing sequences.

STANDALONE

Sensa DMX is provided as a full package solution, with nothing further required to operate. All settings and scenes are directly stored in the device in a SD card and thus require no internet connection. Up to 99 scenes can be stored and triggered either via a scene selector (up to 8 scenes) or via the internal clock and calendar.



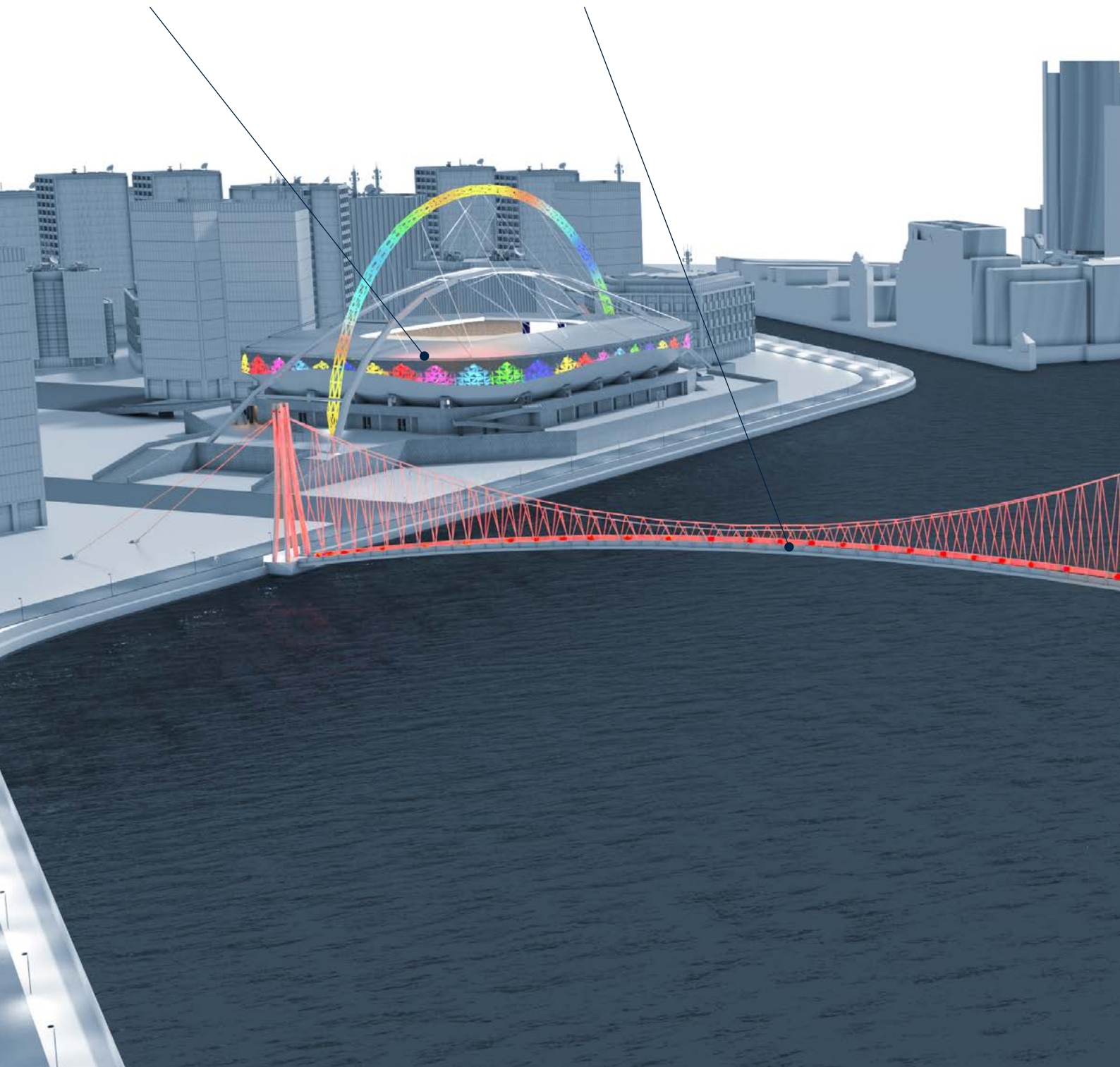
SUGGESTED APPLICATIONS

SPORTS

Create excitement and build team spirit with total control over colour, sequences and pace. With all scenes stored internally and ready for use, Sensa DMX is an ideal solution, from everyday lighting control to major events.

BRIDGES

Bridges can add style as well as function to a location. Enhance with light for special occasions, generate civic pride, support charitable causes or promote sponsorship opportunities – the possibilities are endless.

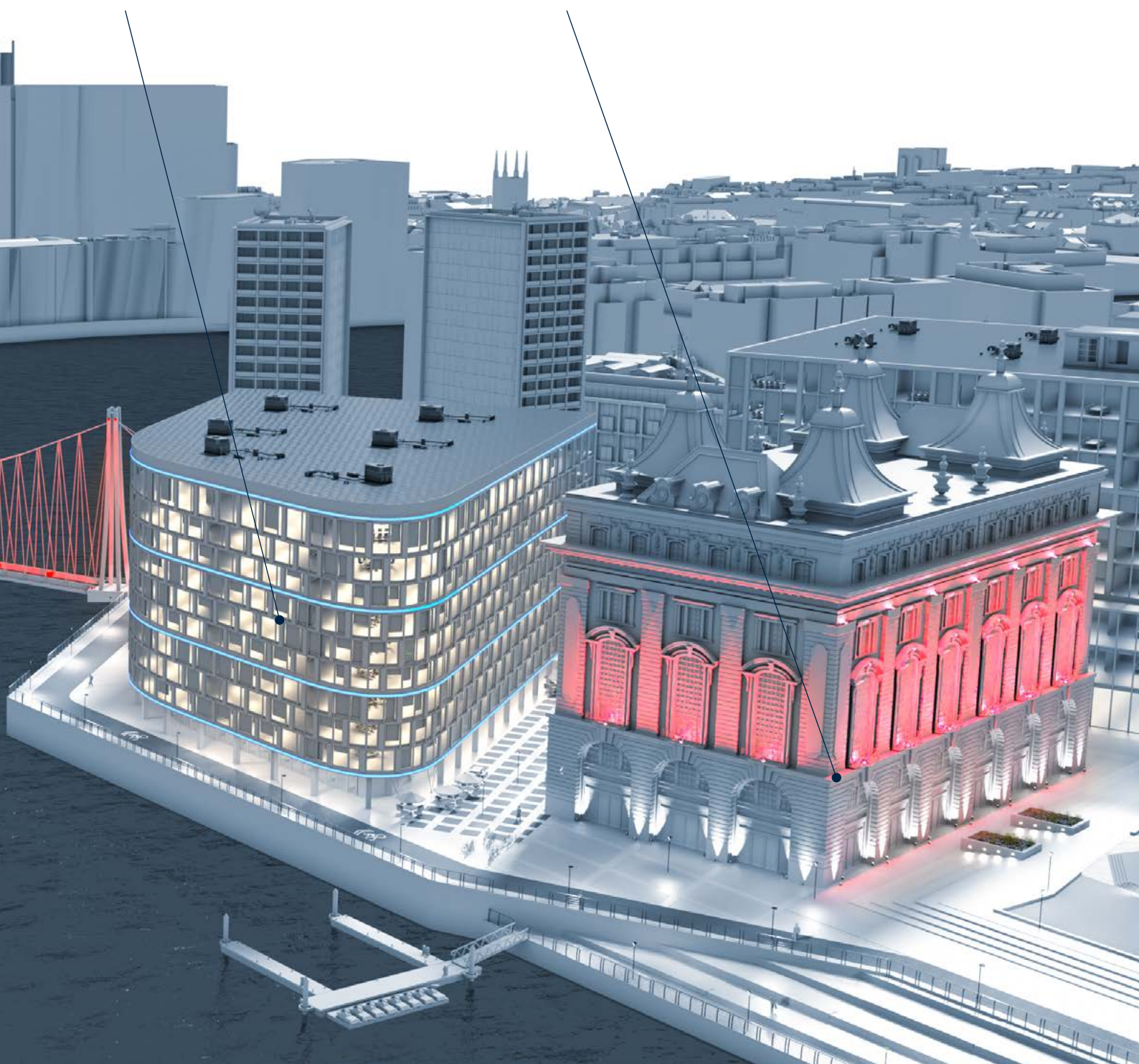


FACADES

Light has the power to transform building facades of all kinds – modern or heritage, commercial, industrial or private. From simple dimming and timer functions to dynamic, full-colour displays, use light to create identity and support branding and events.

ARCHITECTURAL

Enhance building features or provide a new perspective on architectural structures with dynamic lighting displays. Use Sensa DMX to add a splash of colour for events and occasions, and create movement that brings buildings, statues and monuments to life.



COMPLETE CONTROL SOLUTION



SENA DMX CONTROLLER

Available in an IP66 rated enclosure or as a stand-alone kit, the Sensa DMX Controller is provided ready to use with minimal set up required. It delivers 1 DMX universe (512 channels), with an integrated SD card to store all settings and scenes. The controller includes a USB-C port to connect to PC to configure scenes and address RDM compatible fixtures. An input port is also available in order to connect a physical scene selector switch for easier scene selection.



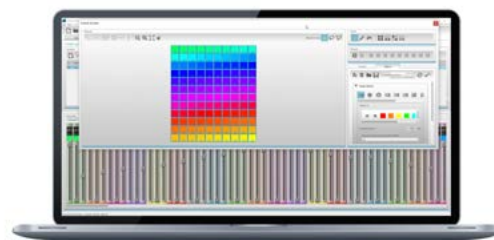
SENA RDM SPLITTER 4CH

The Sensa RDM Splitter 4CH is perfect to extend the capability of the DMX line. Whether you need to extend the distance, or accommodate different directions, the Sensa RDM Splitter 4CH allows the transfer of RDM packets, making it the ideal addition to the control system. It can be installed either in the Sensa DMX Controller box or in a dedicated box.



8 SCENE SWITCH

The Sensa DMX 8 Scene Switch enables the user to choose the desired scene with ease. Up to 8 scenes can be configured to be recalled when required via the switch.



ESA2 PROGRAMMING SOFTWARE

Sensa DMX comes complete with dedicated programming software, specifically designed to work in conjunction with the Sensa DMX Controller. The programming software connects to the controller via USB-C and allows the user to configure the installation and create custom scenes. Triggers for the scenes are directly set in the software and the configuration is transferred to embedded SD card. The programming software also enables live control, giving the user direct, real-time feedback for a better commissioning experience.



PRODUCT COMPATIBILITY

ARCHITECTURAL AND SPORTS LUMINAIRES

CONTRAST – RDM DMX VERSIONS



ALTIS – RDM DMX VERSIONS



EROA – RDM DMX VERSIONS



CAELON – RDM DMX VERSIONS



HOW TO SPECIFY



DMX CONTROLLER (COMPONENTS KIT ONLY)

For mounting in existing electrical cabinet
Includes: DMX controller, power supply

Art No 96222780



DMX CONTROLLER WITH IP66 BOX

Includes: DMX controller, IP66 box, power supply

Art No 96222779



SPLITTER

For mounting in IP66 box with or without DMX controller,
or in existing electrical cabinet
Includes: Splitter only

Art No 96222781



IP66 BOX

For splitter mounting
Includes: IP66 box, power supply

Art No 96222783



POWER SUPPLY

For installation in existing electrical cabinet
Includes: power supply only

Art No 96222782



IP66 8 POSITION SCENE SELECTOR PREWIRED 3 M

Art No 96222792

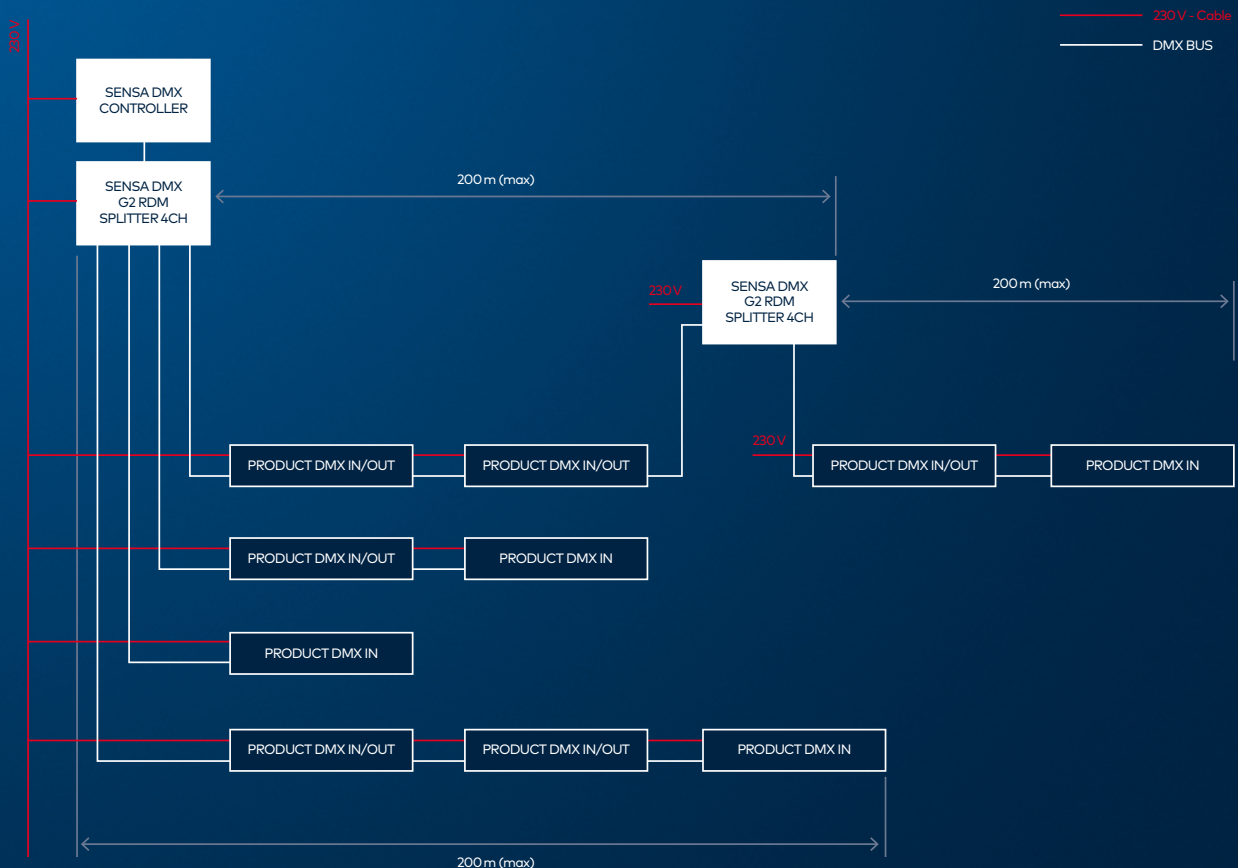


DMX CABLE

Art No 96261601

TECHNICAL CONSIDERATIONS

- 01** One DMX line is limited to 32 DMX loads. For best performance, we recommend to limit to 30 devices. To extend this limit, a splitter is required.
- 02** A DMX line is limited to 200 m and must be terminated by a 120 Ohm resistor (included). To extend this limit, a splitter is required.
- 03** One DMX universe is limited to 512 Channels (128 4CH RGBW fixtures).
- 04** RDM is limited to addressing.
- 05** Up to 99 scenes can be stored in the controller.
- 06** Sensa DMX Controller must be installed in a temperature controlled environment (0 °C to 40 °C).
- 07** Sensa DMX G2 RDM Splitter 4CH requires 5 DMX loads and some luminaires, such as Contrast, may require 2 DMX loads.



Please refer to the Sensa DMX technical documentation for more information.

GET IN TOUCH

www.thornlighting.com/SEND www.thornlighting.com/contacts



**5 YEAR
GUARANTEE**

As a globally leading luminaire manufacturer, Thorn Lighting provides a five-year warranty for its complete product range within all European Countries.
thornlighting.com/guarantee

Thorn Lighting is constantly developing and improving its products. All descriptions, illustrations, drawings and specifications in this publication present only general particulars and shall not form part of any contract. The right is reserved to change specifications without prior notification or public announcement. All goods supplied by the company are supplied subject to the company's General Conditions of Sale, a copy of which is available on request. All measurements are in millimetres and weights in kilograms unless otherwise stated.
06/2024 (INT)

**WE
MAKE
LIGHT
WORK**